

Ss. Peter and Paul Catholic Church
207 Vandalia
Collinsville, IL 62234

Non Profit Org.
U.S. Postage
PAID
Collinsville, IL 62234
Permit No. 54



Ss. Peter and Paul Catholic Church

Growing and Changing: Phase II Planning

As our second capital campaign nears completion, we are planning the next phase of our Master Plan designed to take our parish into the future.

To accomplish our Mission and Vision, we need to make our facilities more attractive, welcoming, accessible and convenient for our parishioners and visitors. The capital campaign is about growing and changing--making our parish better!

Just as those who came before us built the beautiful facilities that we enjoy, it is now time for us to continue to improve and add to them to meet the needs of future generations.

Through your generosity, we completed many projects after our first capital campaign. You again demonstrated your generosity with your pledges for our second campaign that ends this May.

A major reason that we need to make changes to

our church is the expansion of Highway 159 which has made our current front entrance practically unusable. We also need more gathering space to accommodate parishioner needs and our growing ministry activity. All this requires a new, improved church entrance and gathering space. In addition, our current office—the old rectory—needs major repairs that experts have determined are not cost effective to do.

These changes are designed to benefit the parish and individuals by enhancing our sense of community and our environment.

There is much work to do and challenges to be overcome, but as a faith community, we can do it together. Your continued commitment to our capital campaign will assure our success. The best days of our church are ahead and your prayers and generosity will get us there!

We Want Your Feedback!

We want to hear all parishioners' thoughts and ideas about the information in this newsletter on the planned parish renovations. Ideas on how to get through the challenges that these changes will bring are also welcome.

Here are some comments we have already heard:

"I like that the school, office and church are connected. That provides a lot of security for everyone."

"The design is very efficient and I like having the elevator to the lower level."

"I am impressed with the focus on improving security for children, parishioners and visitors."

Your Comments: (Name optional)

Cut out and return by mail to Parish Office, drop it off at the office or place it in the Offertory basket.

Ss. Peter & Paul Catholic Church * 618-345-4343 * www.saintspeter-paul.org



This is a concept architectural drawing of the proposed gathering space and parish office connected to the school (area with white roof south of the church). In this drawing, the new construction is overlaid on the current parish office/garage which you can see in the foreground.

Phase II Projects: More Welcoming and Accessible Facilities for God's Work

Phase II projects are designed to make our facilities more welcoming, attractive and accessible

- Easier access to church, restrooms and activities
- More fellowship space
- More welcoming environment for parishioners and visitors
- Better security for school, staff and parishioners
- Enhancement of worship atmosphere
- More meeting space for God's work

The widening of Highway 159 drastically affects our current entrance

- Eventually there will be five traffic lanes in front of our church with NO parking on Highway 159
- This makes our current front entrance basically unusable in many situations including funerals and weddings

A new entrance and gathering space is planned on the south side of the church

The new entrance/gathering space will:

- Feature a drive way for easier access
- Provide an area for before and after Mass functions and other activities
- Be spacious and include ADA accessible restrooms

- Connect the school, office and church for easier access
- Require the demolition of the current parish office

The Parish Office will be adjacent to the gathering space, making it efficient and accommodating for parishioners, visitors and staff

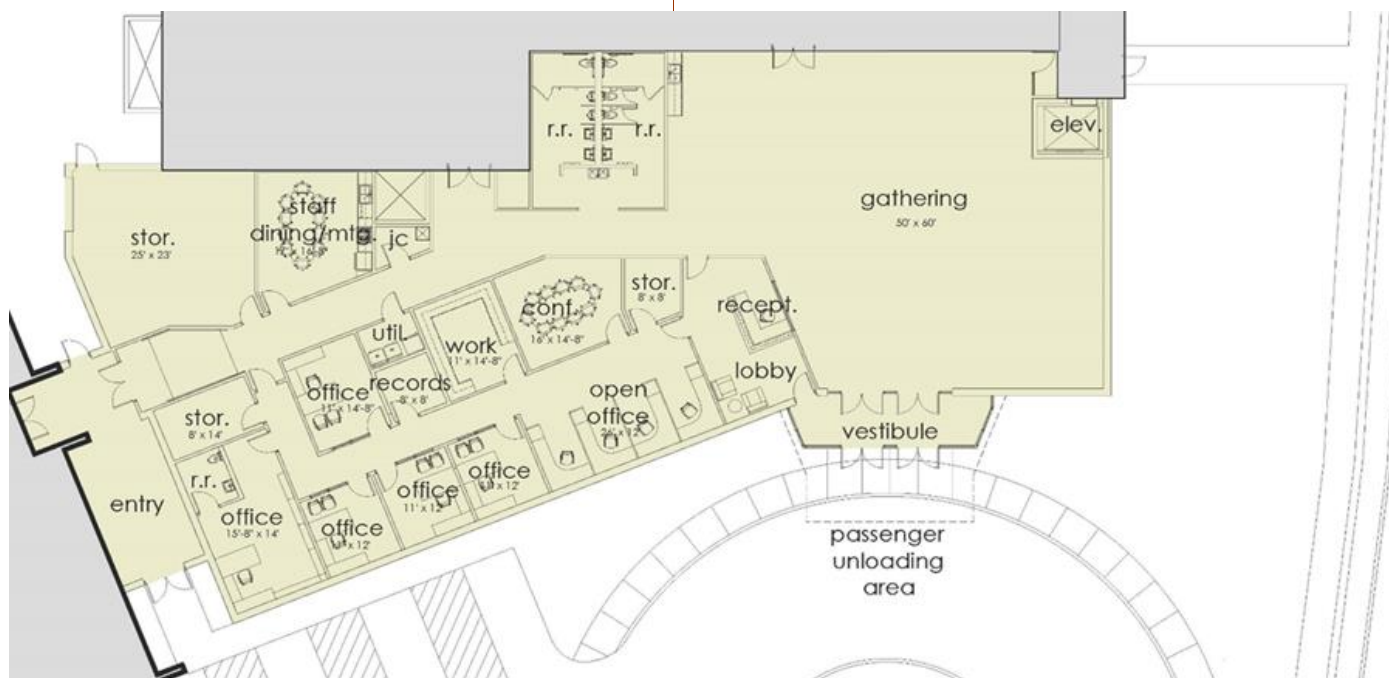
- Will use open office concept to maximize space, improve productivity and reduce energy costs
- Allows for office staffing during weekend Masses for the convenience of parishioners and visitors

The church lower level will be renovated

- Elevator will provide convenient access to church lower level
- Rooms will be remodeled to accommodate meeting space, Bride's Room and the Nursery
- Restrooms will be renovated

The church interior will get needed repairs and updating of liturgical fitments

- Repair/repaint walls and ceiling as needed
- Add protection for stained glass windows
- Upgrade to energy efficient lighting
- Weatherproof east doors and replace other entrance doors to improve energy efficiency
- Upgrade Baptismal font and Ambo



Concept architectural drawing of the gathering space and parish office connected to the school.

Phase I Projects: Improvements to Infrastructure, Functionality and Accessibility

Our first capital campaign started in 2009 and we were able to make significant improvements to the parish infrastructure, functionality, attractiveness and accessibility of our buildings

Phase I School projects completed include:

- New HVAC system, including adding air conditioning
- Renovated bathrooms, painting and baseboards
- Security upgrades
- New playground area including landscaping and fencing

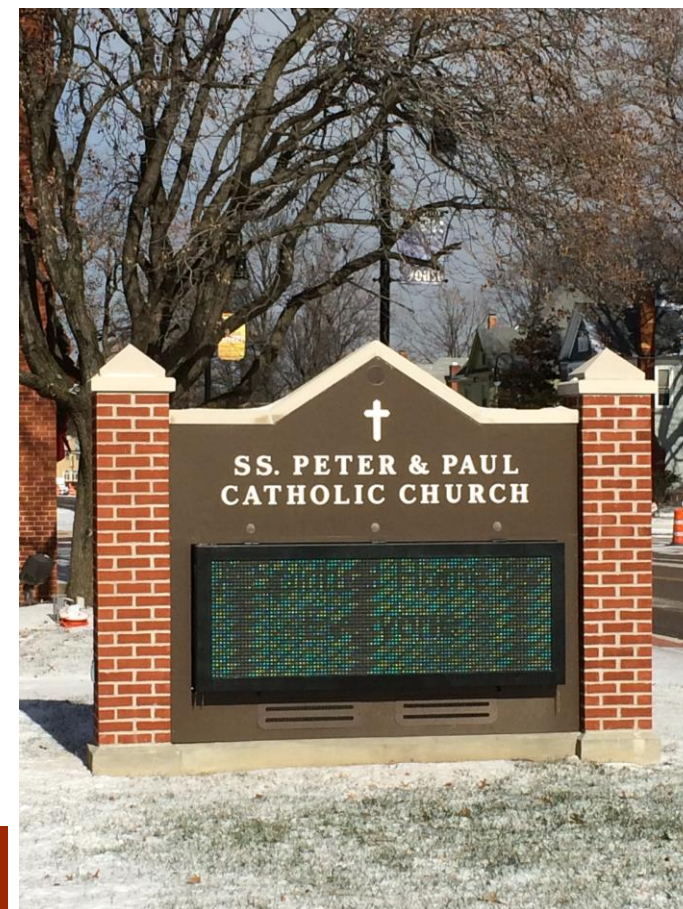
Phase I Church projects completed include:

- New roof (not planned)
- Sound system and upgraded lighting controls replacement (not planned)
- Painting, roof repair, lighting replacement and heating unit replacement

Phase I Parish Center/Gym projects completed include:

- Painting, roof repair, lighting replacement and heating unit replacement

In addition, new signage was installed for the church (electronic), parish center/gym and school.



Next Steps

To accomplish this project, we will need \$2.3 million

Plans are currently in a conceptual design phase, and how and when we move forward is dependent on a number of factors, including the final results of The Future Generations Now! Campaign which will end in May 2015.

Campaign results to date

Goal: \$1.8

Pledges: \$1.2

Contributions to date: \$800,000

Part of the process to get approval for the plan is communication with all parishioners to provide you with information and to get your ideas on how we can reach our goals together.

Opportunities for information and feedback include this newsletter, "Back of Church" meetings with Master Plan Committee and opportunities to view the building designs, presentations after Masses, website and bulletin updates.

Challenges

To realize the benefits of the renovation plan, we will go through a one-year period of change and minimal inconvenience

- Construction projects will encroach on parking lot reducing the number of parking spaces in the south lot
- There will be no access to the church from the south doors
- The parish office will have to be housed in temporary quarters
- The school entrance will be modified
- There will be the usual construction annoyances like noise and dust

We need your feedback on how to get through these challenges together.

